

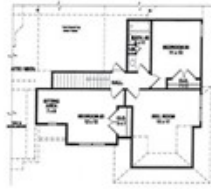
\$ 454,900



Floor Plan Model – Cypress B

FIRST LEVEL

SECOND LEVEL



©2026 M/S United LLC



Floor Plan Model – Cypress B

©2026 M/S United LLC

7398 Newbury Dr, Olive Branch, MS 38654

- » Beds: 5 | Baths: 3 Full
- » MLS #: 4153976
- » Single Family | 2,555 ft² | Lot: 36,590 ft² (0.84 acres)
- » More Info: [7398NewburyDr.IsForSale.com](https://www.7398NewburyDr.IsForSale.com)



Jennie Holliday

(901) 334-6961 (mobile)

(662) 548-2000 (office)

holliday@collins-maury.com

<https://www.hollidaysellshomes.com>



Coldwell Banker Collins-Maury

3276 Goodman Rd E

Southaven, MS 38672

(662) 548-2000

The Cypress B plan offers 5 bedrooms with two down, 3 full bath, the great room leads to the open kitchen and breakfast area room. formal dining, laundry room, upstairs you will have 3 bedrooms or 2 bedrooms with bonus and full bath. Estimated completion date is September 18, 2026.

